

DANNY BEAUCHAMP

Height 188cm / 6' 2.0"

Chest 94cm / 37"

Hips 89cm / 35"

Waist 81cm / 32"

Shoes EU/US/UK 44.5 / 11.5 / 10

Inseam 84cm / 33"

Suit size 48cm / 38"

Suit cut Long

Neck 38cm / 15"

Hair Brown

Hair length 4

Eyes Blue



DANNY BEAUCHAMP

Height 188cm / 6' 2.0"

Chest 94cm / 37"

Hips 89cm / 35"

Waist 81cm / 32"

Shoes EU/US/UK 44.5 / 11.5 /
10

Inseam 84cm / 33"

Suit size 48cm / 38"

Suit cut Long

Neck 38cm / 15"

Hair Brown

Hair length 4

Eyes Blue



The Perfect Man

* Danny wears shirt JIL SANDERS
* Photo by: and EMPORIO ARMANI

Select

MODEL MANAGEMENT

2nd floor, 77 ST. Martins Lane (entrance on Cranbourn Street) , London, WC2N 4AA, England, United Kingdom
Phone: +44 (0) 20 7299 1322 **Fax:** +44 (0) 20 7299 1386 **Email:** info@selectmodel.com **Website:** https://www.selectmodel.com/

DANNY BEAUCHAMP

Height 188cm / 6' 2.0"

Chest 94cm / 37"

Hips 89cm / 35"

Waist 81cm / 32"

Shoes EU/US/UK 44.5 / 11.5 /
10

Inseam 84cm / 33"

Suit size 48cm / 38"

Suit cut Long

Neck 38cm / 15"

Hair Brown

Hair length 4

Eyes Blue



Select

MODEL MANAGEMENT

2nd floor, 77 ST. Martins Lane (entrance on Cranbourn Street) , London, WC2N 4AA, England, United Kingdom
Phone: +44 (0) 20 7299 1322 **Fax:** +44 (0) 20 7299 1386 **Email:** info@selectmodel.com **Website:** https://www.selectmodel.com/

DANNY BEAUCHAMP

Height 188cm / 6' 2.0"

Chest 94cm / 37"

Hips 89cm / 35"

Waist 81cm / 32"

Shoes EU/US/UK 44.5 / 11.5 /
10

Inseam 84cm / 33"

Suit size 48cm / 38"

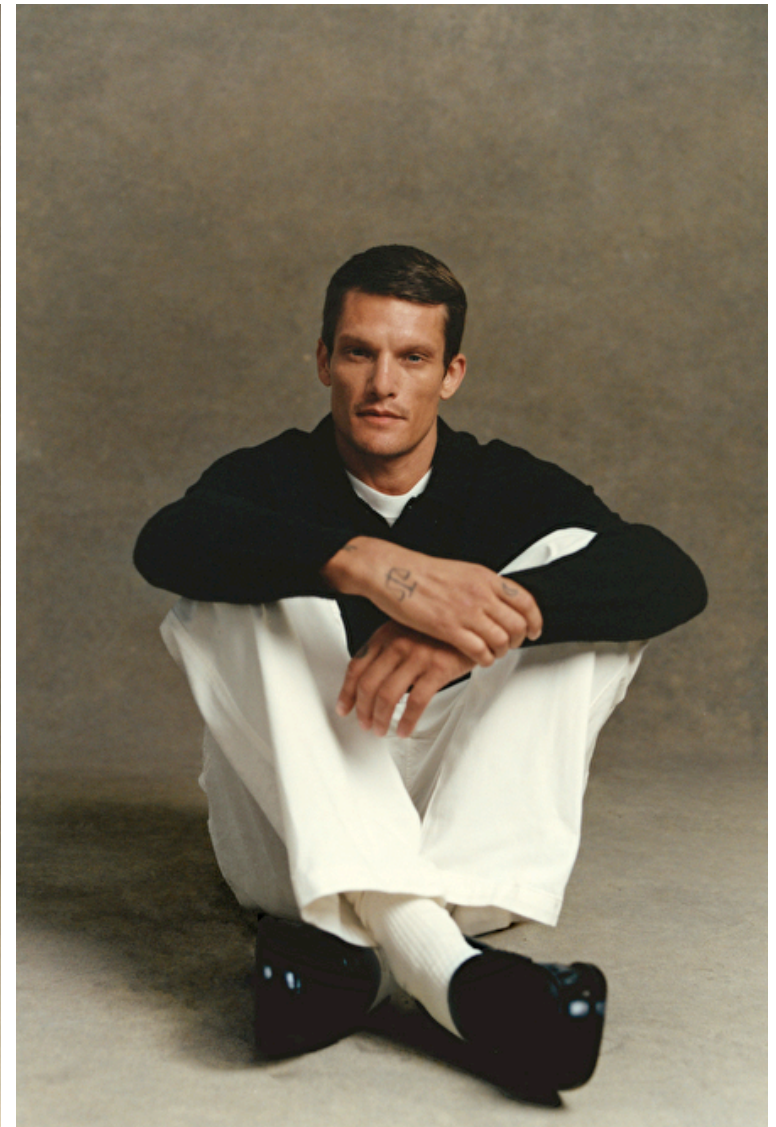
Suit cut Long

Neck 38cm / 15"

Hair Brown

Hair length 4

Eyes Blue



Select

MODEL MANAGEMENT

2nd floor, 77 ST. Martins Lane (entrance on Cranbourn Street) , London, WC2N 4AA, England, United Kingdom
Phone: +44 (0) 20 7299 1322 **Fax:** +44 (0) 20 7299 1386 **Email:** info@selectmodel.com **Website:** https://www.selectmodel.com/

DANNY BEAUCHAMP

Height 188cm / 6' 2.0"

Chest 94cm / 37"

Hips 89cm / 35"

Waist 81cm / 32"

Shoes EU/US/UK 44.5 / 11.5 /
10

Inseam 84cm / 33"

Suit size 48cm / 38"

Suit cut Long

Neck 38cm / 15"

Hair Brown

Hair length 4

Eyes Blue



Select

MODEL MANAGEMENT

2nd floor, 77 ST. Martins Lane (entrance on Cranbourn Street) , London, WC2N 4AA, England, United Kingdom
Phone: +44 (0) 20 7299 1322 **Fax:** +44 (0) 20 7299 1386 **Email:** info@selectmodel.com **Website:** https://www.selectmodel.com/

Style+

DANNY BEAUCHAMP

Height 188cm / 6' 2.0"

Chest 94cm / 37"

Hips 89cm / 35"

Waist 81cm / 32"

Shoes EU/US/UK 44.5 / 11.5 /
10

Inseam 84cm / 33"

Suit size 48cm / 38"

Suit cut Long

Neck 38cm / 15"

Hair Brown

Hair length 4

Eyes Blue



* Danny wears leather jacket, pants and shoes ZEGNA
* Back suit EMPORIO ARMANI



Select

MODEL MANAGEMENT

2nd floor, 77 ST. Martins Lane (entrance on Cranbourn Street) , London, WC2N 4AA, England, United Kingdom
Phone: +44 (0) 20 7299 1322 **Fax:** +44 (0) 20 7299 1386 **Email:** info@selectmodel.com **Website:** https://www.selectmodel.com/

DANNY BEAUCHAMP

Height 188cm / 6' 2.0"

Chest 94cm / 37"

Hips 89cm / 35"

Waist 81cm / 32"

Shoes EU/US/UK 44.5 / 11.5 /
10

Inseam 84cm / 33"

Suit size 48cm / 38"

Suit cut Long

Neck 38cm / 15"

Hair Brown

Hair length 4

Eyes Blue



The Perfect Man

Photography: PETER LINDBERGH | Styling: SIMONE BOTTICELLI and Giovanni ANTONIARDI
HAIR: HENRI BEAUCHAMP at KISS | MAKEUP: SEVERINA | Shoes: Valentino | SUNGLASSES: PRADA

Select

MODEL MANAGEMENT

2nd floor, 77 ST. Martins Lane (entrance on Cranbourn Street) , London, WC2N 4AA, England, United Kingdom
Phone: +44 (0) 20 7299 1322 **Fax:** +44 (0) 20 7299 1386 **Email:** info@selectmodel.com **Website:** https://www.selectmodel.com/

DANNY BEAUCHAMP

Height 188cm / 6' 2.0"

Chest 94cm / 37"

Hips 89cm / 35"

Waist 81cm / 32"

Shoes EU/US/UK 44.5 / 11.5 /
10

Inseam 84cm / 33"

Suit size 48cm / 38"

Suit cut Long

Neck 38cm / 15"

Hair Brown

Hair length 4

Eyes Blue



Select

MODEL MANAGEMENT

2nd floor, 77 ST. Martins Lane (entrance on Cranbourn Street) , London, WC2N 4AA, England, United Kingdom
Phone: +44 (0) 20 7299 1322 **Fax:** +44 (0) 20 7299 1386 **Email:** info@selectmodel.com **Website:** https://www.selectmodel.com/

DANNY BEAUCHAMP

Height 188cm / 6' 2.0"

Chest 94cm / 37"

Hips 89cm / 35"

Waist 81cm / 32"

Shoes EU/US/UK 44.5 / 11.5 /
10

Inseam 84cm / 33"

Suit size 48cm / 38"

Suit cut Long

Neck 38cm / 15"

Hair Brown

Hair length 4

Eyes Blue



Select

MODEL MANAGEMENT

2nd floor, 77 ST. Martins Lane (entrance on Cranbourn Street) , London, WC2N 4AA, England, United Kingdom
Phone: +44 (0) 20 7299 1322 **Fax:** +44 (0) 20 7299 1386 **Email:** info@selectmodel.com **Website:** https://www.selectmodel.com/

DANNY BEAUCHAMP

Height 188cm / 6' 2.0"

Chest 94cm / 37"

Hips 89cm / 35"

Waist 81cm / 32"

Shoes EU/US/UK 44.5 / 11.5 /
10

Inseam 84cm / 33"

Suit size 48cm / 38"

Suit cut Long

Neck 38cm / 15"

Hair Brown

Hair length 4

Eyes Blue



Select

MODEL MANAGEMENT

2nd floor, 77 ST. Martins Lane (entrance on Cranbourn Street) , London, WC2N 4AA, England, United Kingdom
Phone: +44 (0) 20 7299 1322 **Fax:** +44 (0) 20 7299 1386 **Email:** info@selectmodel.com **Website:** https://www.selectmodel.com/

DANNY BEAUCHAMP

Height 188cm / 6' 2.0"

Chest 94cm / 37"

Hips 89cm / 35"

Waist 81cm / 32"

Shoes EU/US/UK 44.5 / 11.5 /
10

Inseam 84cm / 33"

Suit size 48cm / 38"

Suit cut Long

Neck 38cm / 15"

Hair Brown

Hair length 4

Eyes Blue



* Danny wears trench coat SHIRTS, shorts JE, SANDER, shoes ZEGLA
* knit shirt, pants and shoes ZEGLA

The Perfect Man

Select

MODEL MANAGEMENT

2nd floor, 77 ST. Martins Lane (entrance on Cranbourn Street) , London, WC2N 4AA, England, United Kingdom
Phone: +44 (0) 20 7299 1322 **Fax:** +44 (0) 20 7299 1386 **Email:** info@selectmodel.com **Website:** https://www.selectmodel.com/

Style+

DANNY BEAUCHAMP

Height 188cm / 6' 2.0"

Chest 94cm / 37"

Hips 89cm / 35"

Waist 81cm / 32"

Shoes EU/US/UK 44.5 / 11.5 /
10

Inseam 84cm / 33"

Suit size 48cm / 38"

Suit cut Long

Neck 38cm / 15"

Hair Brown

Hair length 4

Eyes Blue



* Danny: suit/cost by ANDERSON
* Jacket, pants and shoes: ZEUSNY



Select

MODEL MANAGEMENT

2nd floor, 77 ST. Martins Lane (entrance on Cranbourn Street) , London, WC2N 4AA, England, United Kingdom
Phone: +44 (0) 20 7299 1322 **Fax:** +44 (0) 20 7299 1386 **Email:** info@selectmodel.com **Website:** https://www.selectmodel.com/

DANNY BEAUCHAMP

Height 188cm / 6' 2.0"

Chest 94cm / 37"

Hips 89cm / 35"

Waist 81cm / 32"

Shoes EU/US/UK 44.5 / 11.5 /
10

Inseam 84cm / 33"

Suit size 48cm / 38"

Suit cut Long

Neck 38cm / 15"

Hair Brown

Hair length 4

Eyes Blue



Select

MODEL MANAGEMENT

2nd floor, 77 ST. Martins Lane (entrance on Cranbourn Street) , London, WC2N 4AA, England, United Kingdom
Phone: +44 (0) 20 7299 1322 **Fax:** +44 (0) 20 7299 1386 **Email:** info@selectmodel.com **Website:** https://www.selectmodel.com/

DANNY BEAUCHAMP

Height 188cm / 6' 2.0"

Chest 94cm / 37"

Hips 89cm / 35"

Waist 81cm / 32"

Shoes EU/US/UK 44.5 / 11.5 /
10

Inseam 84cm / 33"

Suit size 48cm / 38"

Suit cut Long

Neck 38cm / 15"

Hair Brown

Hair length 4

Eyes Blue



Select

MODEL MANAGEMENT

2nd floor, 77 ST. Martins Lane (entrance on Cranbourn Street) , London, WC2N 4AA, England, United Kingdom
Phone: +44 (0) 20 7299 1322 **Fax:** +44 (0) 20 7299 1386 **Email:** info@selectmodel.com **Website:** <https://www.selectmodel.com/>

DANNY BEAUCHAMP

Height 188cm / 6' 2.0"

Chest 94cm / 37"

Hips 89cm / 35"

Waist 81cm / 32"

Shoes EU/US/UK 44.5 / 11.5 /
10

Inseam 84cm / 33"

Suit size 48cm / 38"

Suit cut Long

Neck 38cm / 15"

Hair Brown

Hair length 4

Eyes Blue



Select

MODEL MANAGEMENT

2nd floor, 77 ST. Martins Lane (entrance on Cranbourn Street) , London, WC2N 4AA, England, United Kingdom
Phone: +44 (0) 20 7299 1322 **Fax:** +44 (0) 20 7299 1386 **Email:** info@selectmodel.com **Website:** https://www.selectmodel.com/

DANNY BEAUCHAMP

Height 188cm / 6' 2.0"

Chest 94cm / 37"

Hips 89cm / 35"

Waist 81cm / 32"

Shoes EU/US/UK 44.5 / 11.5 /
10

Inseam 84cm / 33"

Suit size 48cm / 38"

Suit cut Long

Neck 38cm / 15"

Hair Brown

Hair length 4

Eyes Blue



Select

MODEL MANAGEMENT

2nd floor, 77 ST. Martins Lane (entrance on Cranbourn Street) , London, WC2N 4AA, England, United Kingdom
Phone: +44 (0) 20 7299 1322 **Fax:** +44 (0) 20 7299 1386 **Email:** info@selectmodel.com **Website:** https://www.selectmodel.com/

DANNY BEAUCHAMP

Height 188cm / 6' 2.0"

Chest 94cm / 37"

Hips 89cm / 35"

Waist 81cm / 32"

Shoes EU/US/UK 44.5 / 11.5 /
10

Inseam 84cm / 33"

Suit size 48cm / 38"

Suit cut Long

Neck 38cm / 15"

Hair Brown

Hair length 4

Eyes Blue



Select

MODEL MANAGEMENT

2nd floor, 77 ST. Martins Lane (entrance on Cranbourn Street) , London, WC2N 4AA, England, United Kingdom
Phone: +44 (0) 20 7299 1322 **Fax:** +44 (0) 20 7299 1386 **Email:** info@selectmodel.com **Website:** https://www.selectmodel.com/

DANNY BEAUCHAMP

Height 188cm / 6' 2.0"

Chest 94cm / 37"

Hips 89cm / 35"

Waist 81cm / 32"

Shoes EU/US/UK 44.5 / 11.5 /
10

Inseam 84cm / 33"

Suit size 48cm / 38"

Suit cut Long

Neck 38cm / 15"

Hair Brown

Hair length 4

Eyes Blue



Select

MODEL MANAGEMENT

2nd floor, 77 ST. Martins Lane (entrance on Cranbourn Street) , London, WC2N 4AA, England, United Kingdom
Phone: +44 (0) 20 7299 1322 **Fax:** +44 (0) 20 7299 1386 **Email:** info@selectmodel.com **Website:** https://www.selectmodel.com/

DANNY BEAUCHAMP

Height 188cm / 6' 2.0"

Chest 94cm / 37"

Hips 89cm / 35"

Waist 81cm / 32"

Shoes EU/US/UK 44.5 / 11.5 /
10

Inseam 84cm / 33"

Suit size 48cm / 38"

Suit cut Long

Neck 38cm / 15"

Hair Brown

Hair length 4

Eyes Blue



DANNY BEAUCHAMP

Height 188cm / 6' 2.0"

Chest 94cm / 37"

Hips 89cm / 35"

Waist 81cm / 32"

Shoes EU/US/UK 44.5 / 11.5 /
10

Inseam 84cm / 33"

Suit size 48cm / 38"

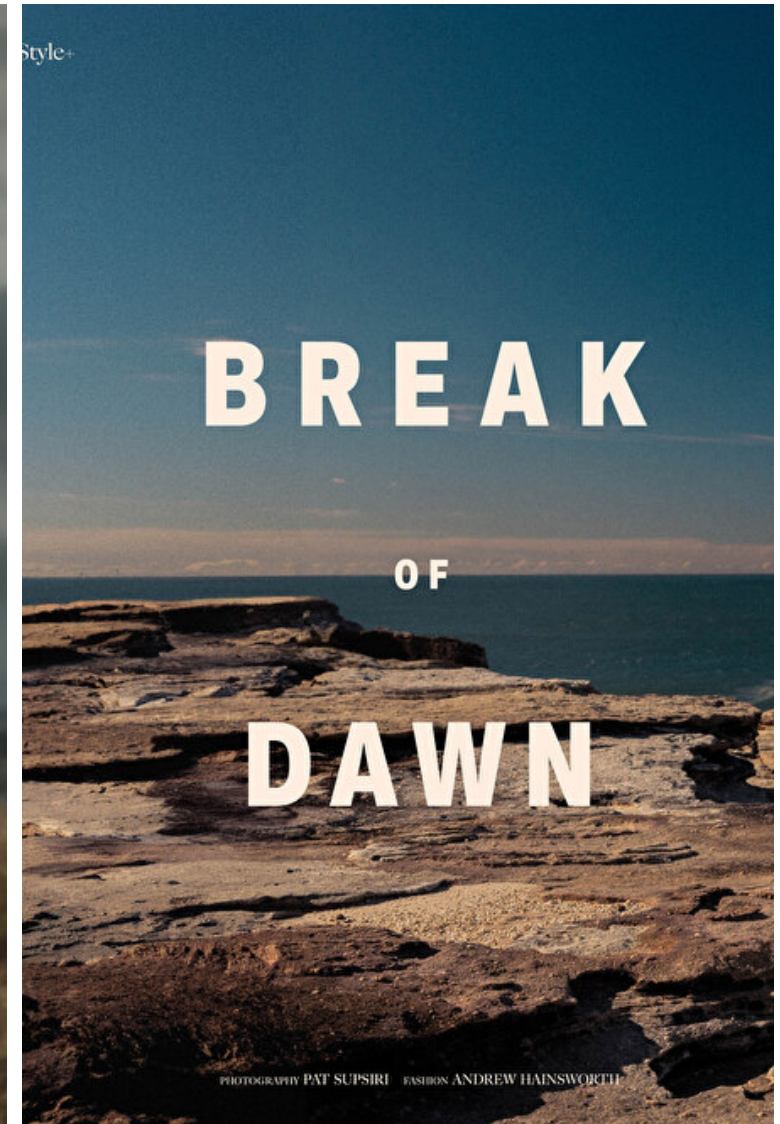
Suit cut Long

Neck 38cm / 15"

Hair Brown

Hair length 4

Eyes Blue



Select

MODEL MANAGEMENT

2nd floor, 77 ST. Martins Lane (entrance on Cranbourn Street) , London, WC2N 4AA, England, United Kingdom
Phone: +44 (0) 20 7299 1322 **Fax:** +44 (0) 20 7299 1386 **Email:** info@selectmodel.com **Website:** https://www.selectmodel.com/

DANNY BEAUCHAMP

Height 188cm / 6' 2.0"

Chest 94cm / 37"

Hips 89cm / 35"

Waist 81cm / 32"

Shoes EU/US/UK 44.5 / 11.5 /
10

Inseam 84cm / 33"

Suit size 48cm / 38"

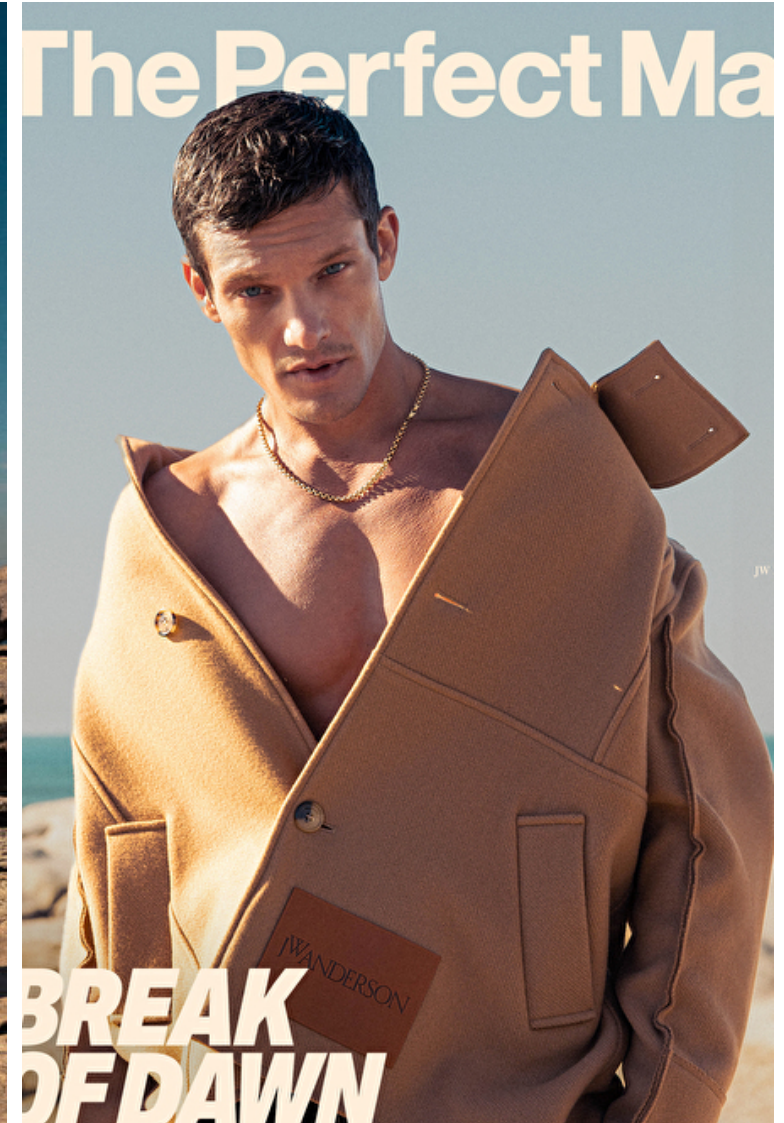
Suit cut Long

Neck 38cm / 15"

Hair Brown

Hair length 4

Eyes Blue



DANNY BEAUCHAMP

Height 188cm / 6' 2.0"

Chest 94cm / 37"

Hips 89cm / 35"

Waist 81cm / 32"

Shoes EU/US/UK 44.5 / 11.5 /
10

Inseam 84cm / 33"

Suit size 48cm / 38"

Suit cut Long

Neck 38cm / 15"

Hair Brown

Hair length 4

Eyes Blue



Select

MODEL MANAGEMENT

2nd floor, 77 ST. Martins Lane (entrance on Cranbourn Street) , London, WC2N 4AA, England, United Kingdom
Phone: +44 (0) 20 7299 1322 **Fax:** +44 (0) 20 7299 1386 **Email:** info@selectmodel.com **Website:** https://www.selectmodel.com/

DANNY BEAUCHAMP

Height 188cm / 6' 2.0"

Chest 94cm / 37"

Hips 89cm / 35"

Waist 81cm / 32"

Shoes EU/US/UK 44.5 / 11.5 /
10

Inseam 84cm / 33"

Suit size 48cm / 38"

Suit cut Long

Neck 38cm / 15"

Hair Brown

Hair length 4

Eyes Blue

